

# Uni Chair

---

A simple and stylish moulded polypropylene chair perfect for cafes areas.

- Available with a seat pad or fully upholstered.
- Shell available in black, white and slate grey.



Stackable.



Weighs only 4.25kg



Available fully upholstered or with just seat pad.



Several shell colours available.



Designed in Britain



Made in Britain



01427 677 556 | 07841 501702



info@trinitychurchfurniture.co.uk



www.trinitychurchfurniture.co.uk

# Uni Chair

---



Uni chair with plain polypropylene shell



Upholstered seat pad



Stacking on floor

# Uni Chair

---

## Dimensions (in mm)

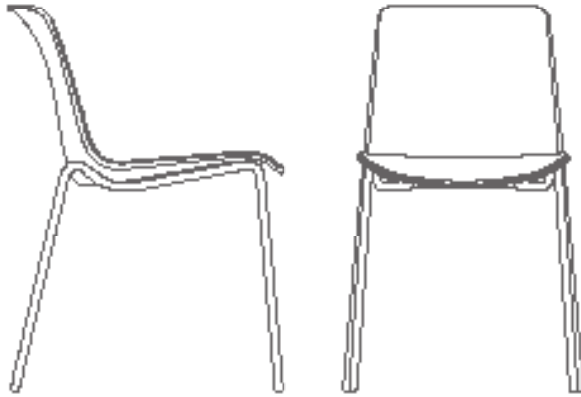
### Chair 4 leg frame

overall height 790

seat height 460

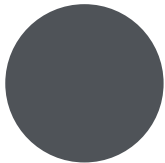
overall width 510

overall depth 540

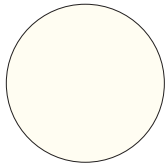


---

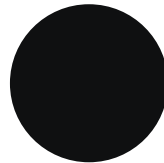
## Chair Shell Colour Options



Slate Grey

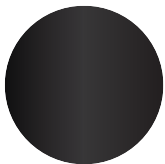


White

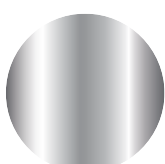


Black

## Metalwork



Black



Chrome



01427 677 556 | 07841 501702



info@trinitychurchfurniture.co.uk



www.trinitychurchfurniture.co.uk