

R Table

The R Table is a very cost effective table system for church buildings. With natural veneer tops and powder coated bases there is a huge number of combinations. The tables are also available in non-standard top sizes and shapes and it can also be specified as fixed to the floor.



Designed in Britain



Made in Britain

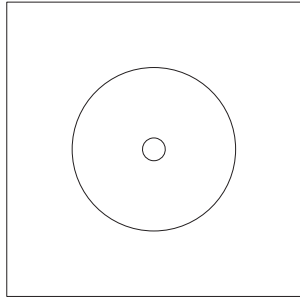




Dimensions (in mm)

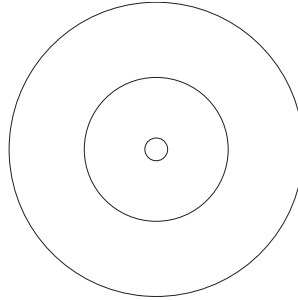
Square

- 600 x 600
- 750 x 750
- 800 x 800
- 900 x 900
- 1000 x 1000



Round

- Ø 600
- Ø 800
- Ø 900
- Ø 1000
- Ø 1200



Standard height
740

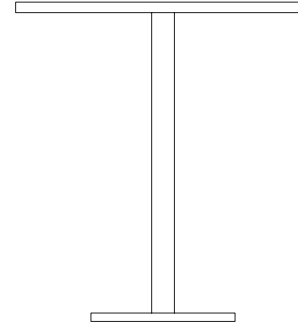


Table Top MFC Finishes



Swiss pear



Oak



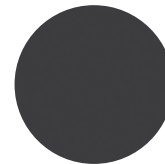
Walnut



Beech



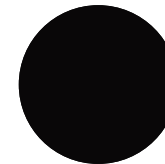
White



Graphite

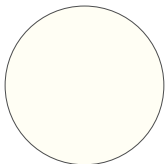


Light Grey

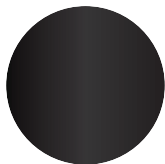


Black

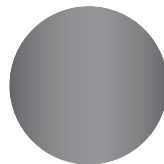
Metalwork



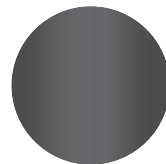
White



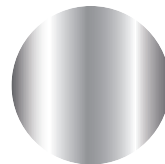
Black



Silver



Gunmetal



Chrome